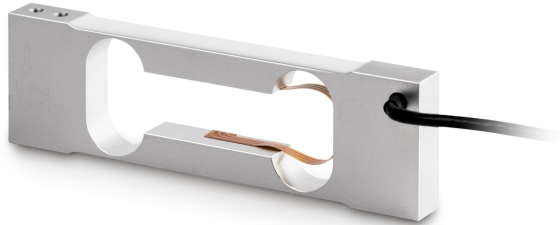


KERN CP 600-0P4

KERN

Single-point load cell made of anodised aluminium



Approval

CE mark ✓

Construction

Design	Singlepoint load cell
Dimension (W×D×H)	110×33×10 mm
Material	aluminium
Cable length	0,4 m
Mounting - force application	2 × threaded hole M3
Mounting - force dissipation	2 × threaded hole M3

Functions

IP protection - complete device IP65

Environmental conditions

Use temperature [Min]	-10 °C
Use temperature [Max]	40 °C
Ambient temperature [Min]	-20 °C
Ambient temperature [Max]	50 °C
Storage temperature [Min]	-30 °C
Storage temperature [Max]	60 °C

Packing & Shipping

Readability force [d] (N)	1 d
Dimensions packaging (W×D×H)	120×55×35 mm
Net weight	0,067 kg
Shipping method	Parcel service
Net weight approx.	0,10 kg
Gross weight approx.	0,10 kg
Shipping weight	0,1 kg

Services (optional)

Article number for DAkkS calibration (compressive force) 963-261V

Pictograms

STANDARD



OPTION



Category

Brand	Sauter
Product category	Measuring cell
Product group	Load cell
Product family	CP P4

Measuring System

Weighing capacity [Max]	600 g
Load cell connection	4-wire
Load cell OIML class	C3
Load cell - Resolution (verifiable)	3000 e
Maximum platform size	200×200 mm
Load cell - characteristic value - nominal	0,9 mV/V
Load cell - characteristic value - variance	0,1 mV/V
Load cell - Y-value	4667
Load cell - Combined error	0,023%
Load cell - Dead load [Min] (%)	0%
Measuring applications	mass
Load cell - Input resistance - nominal	406 Ω
Load cell - Output resistance - nominal	350 Ω
Load cell - Isolation resistance - [Min]	5000 MΩ
Load cell - Recommended excitation voltage [Min]	5 V
Load cell - Recommended excitation voltage [Max]	12 V
Load cell - Input resistance - variance	6 Ω
Load cell - Output resistance - variance	3 Ω
Directions of force	compression